



2013

Community Health Needs Assessment *and* Implementation Plan

Prepared by:
Community Health Network, Inc.
d/b/a
Berlin Memorial Hospital

Approved:
September, 2013

This document has been prepared in compliance with Internal Revenue Code (“IRC”) Section 501(r) which was added by the Patient Protection and Affordable Care Act (“ACA”) of 2010, Public Law 11-148 and requires all 501(c)(3) non-profit hospitals to submit a Community Health Needs Assessment (“CHNA”). The following individuals compiled Community Health Network, Inc. d/b/a Berlin Memorial Hospital’s (“CHN”) CHNA:

John Feeney, MBA

President & CEO, CHN

Email: john.feeney@chnwi.org

Tom Krystowiak, MBA

Chief Financial Officer, CHN

Email: tom.krystowiak@chnwi.org

Jenna Walker, JD

Director of Corporate Compliance & Legal Services, CHN

Email: jenna.walker@chnwi.org

Tammy Bending, MHA Candidate

Administrator, Berlin Memorial Hospital, CHN

Email: tammy.bending@chnwi.org

Kelly Krause

Vice President of Marketing and Public Relations, CHN

Email: kelly.krause@chnwi.org

Nathan Luedke

Manager of Medical Group Operations, CHN

(Former Marquette County Health Officer)

Email: nathan.luedke@chnwi.org

Pam Alf

CHN Workwell Coordinator

Email: pamela.alf@chnwi.org

This document has been created with guidance from the template created by the National Center for Rural Health Works with input and advice from Community Health Needs Assessment National Advisory Team. This template has been chosen to ensure compliance with the legislative requirements of the ACA.

BACKGROUND

In order to reduce duplication and to ensure consideration of broad community interests, the creation of the 2013 CHNA was a partnership between Community Health Network, Inc. d/b/a Berlin Memorial Hospital (“CHN”) and each county that comprises CHN’s primary service area: Green Lake County, Waushara County and Marquette County. CHN would like to thank the three county health departments for compiling the coalitions, hosting the community meetings and measuring and assessing community needs in conjunction with CHN. These county CHNAs have been extremely important tools for CHN to identify needs and develop a strategic plan to implement progress in those of CHN’s medical service area that have the greatest needs.

LEGISLATIVE REQUIREMENTS

Section 501(r)(3) of the IRC requires a hospital organization to conduct a CHNA at least once every three years and adopt and implement a strategy to meet the community health needs identified through the CHNA. The CHNA includes input from persons representing the broad interests of the community served by CHN and input from those in our community with special knowledge of or expertise in public health. CHN will make the CHNA widely available to the public by posting it on its public website (www.chnwi.org) and will have hard copies available for inspection onsite at its Berlin Memorial Hospital campus.

In addition to the requirement to conduct a CHNA and create an Implementation Strategy, CHN will comply with Section 501(4) by updating its written Financial Assistance Policy, referred to by CHN as Community Care.

CHN’s Community Care program provides financial assistance for those who cannot afford to pay for care. Medically necessary services are provided at no charge or at a reduced rate to community members who meet specific eligibility criteria. During fiscal years 2012, 2011, and 2010 the value of Community Care services provided was \$2,666,000, \$2,691,000, and \$2,095,000 respectively.

FACILITATOR/STEERING COMMITTEE

CHN’s CHNA committee members are listed in the beginning pages of this CHNA. In addition to those compiling the CHNA, CHN has meaningfully participated with representation on three separate county coalitions. This representation has been instrumental in ensuring the broad interests of our medical service area are represented in CHN’s CHNA and consistent needs can be identified and prioritized as particularly important to address. The membership listings of these coalitions evidence the diverse group that has assisted in this CHNA by identifying our community’s most important health needs. Members are as follows:

County Coalition Facilitators

- Green Lake County
 - o Kathy Munsey, RN, Green Lake County Health Officer
- Waushara County
 - o Patti Wohfeil, BCRN, MPA, Waushara County Health Officer/Director
- Marquette County
 - o Nathan Luedke, Marquette County, Health Officer (Former)

County Coalition Membership details are included as attachments to this document.

OVERVIEW OF HOSPITAL SERVICES/COMMUNITY BENEFITS

Inpatient Services

- Acute Inpatient - Provide acute admissions for up to 96 hours on the average. This is for any patient that can't be treated on an outpatient basis.
- Observation - This is for an admit when more information is needed to determine if patient needs an acute admit or can be treated outpatient.
- Palliative Care - Provide patients and family members professional services during their time of need.
- Physical Therapies - Provide Physical, Occupational & Speech Therapists that work with patients who are admitted.
- Laboratory - Provide a large array of laboratory tests that are done in our laboratory. Some tests are sent out.
- Radiology - Provide X-Ray, CT Scan, PET Scan, MRI, ultrasound
- EKG's - Provide electrical tracings of the heart.
- Pharmacy - Full line of medications to service our patients, and two retail locations.
- Wound Care - Provide wound care by a physician, certified wound care nurse & certified dietitian.
- Social Services - Provide Social Service needs for patients.
- Dietary – Provide certified dietitian.

Outpatient Services

- Laboratory - Provides lab tests to anyone with a physician's order. Most lab tests are done in house, some are sent out.
- Radiology - Provides X-Rays, CT Scans & MRIs to anyone with physician's order.
- Emergency Department - Our Emergency Department is open 24 hours a day seven days a week to provide care to patients with emergencies.
- Sleep Lab - Provide sleep testing by a board certified physician.
- Nerve Conduction Tests - Nerve tests by a licensed tech. This can provide identifying deficits in muscles & nerves.
- Pulmonary Function Tests - Testing for lung function & medication treatment

- DEXA Scan – Osteoporosis and Bone Density Scanning - A 10 minute test that measures bone density to determine loss of bone mass.
- Wound Care - Provide scheduled wound care visits by a physician, certified wound care nurse and/or certified dietitian.
- Holter Monitor - A 24-hour device that monitors tracings of your heart for diagnostic purposes.
- Physical Therapies - Provide Physical, Occupational & Speech Therapists.
- Forensic (SANE) Program - Provide sexual assault & abuse exams.
- Physicals - Provide Department of Transportation (DOT) physicals.
- Workers' Compensation/Case Management - Provide a detailed workers' compensation program; assists employers to save money & helps employees recover in a timely manner.
- Social Services - Provide Social Service needs for patients.

Clinics

- Various CHN Medical Centers in communities of: Berlin, Green Lake, Ripon, Markesan, Montello, Princeton, Redgranite, Wautoma, Wild Rose, and Coloma offering family practice services by a board certified family physician. Open Monday through Friday 8AM to 5PM.
- Walk-In Clinic
- Emergency Department 24/7
- Women's Health - Provide specific services to women's needs.
- Internal Medicine
- Anesthesiology
- Dermatology
- General Surgery
- Orthopedics
- Pathology
- Radiology
- Anti-Coagulation
- Cardiology
- Gastroenterology
- Nephrology
- Neurology
- Oncology
- Ophthalmology
- ENT
- Pain Management
- Pharmacy
- Podiatry
- Urology

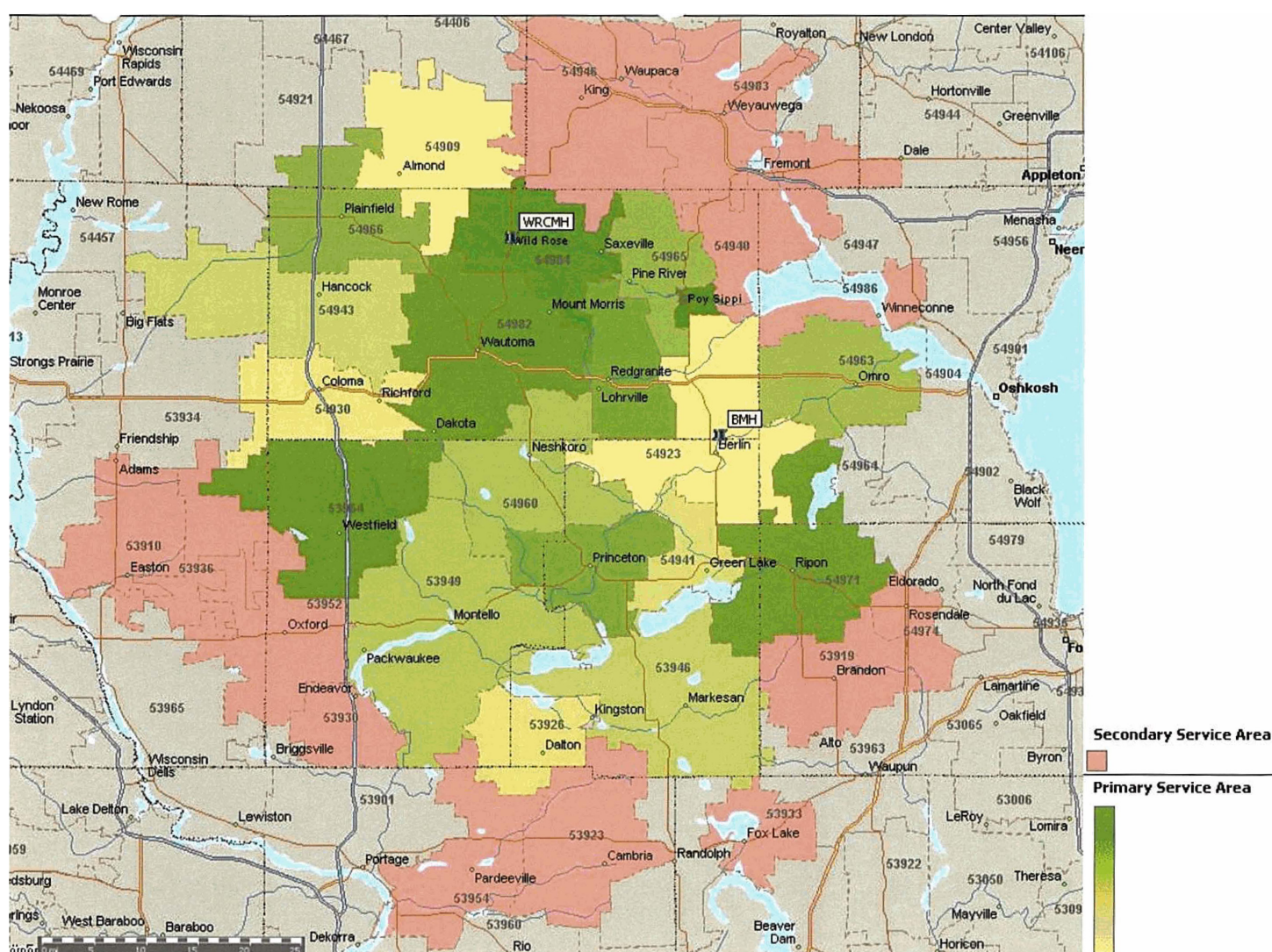
Community Activities/Sponsorships

- Health Fair - Provide a community health fair with 30+ vendors
- Diabetes Health Fair – An annual community health fair with vendors specific to helping the Diabetic and pre-Diabetic population we serve.
- 5K Run/Walk – Annual event to raise money for cancer fund through our Foundation. Over 600 participants in 2013.
- Golf Outing – Annual outing to raise funds for our Foundation fund.
- 5K and 13.1 Half Marathon – annual event on Labor Day weekend
- Night out For Women’s Health – Host annual event with vendors to over 350 area women discussing pertinent health topics.
- Top Sponsor of Boys/Girls Club event – Sponsorship to raise money at dinner auction for the Club.
- VEX Robotics – sponsor of program at local high school
- “Business After 5” events – Work with local Chamber offices to host at our various clinic locations.
- “TIF” seminars – offer free seminars on the TIF surgical procedure by CHN general surgeon Dr. Horace Lo.
- Thrasher Opera House – sponsor of one show
- Waushara and Green Lake County Fairs – sponsor of activities at community fairs
- Ripon Cookie Daze – event sponsor
- Local post proms – event sponsorships
- Young Angler Tournament – sponsor
- Blue Ribbon Days in Wautoma – sponsor and participant
- Run for Sam 10K – sponsor
- Relay for Life (American Cancer Society) – sponsor
- Fire Education and Safety Programs – donation
- Zumba – class sponsor and donation of location
- Family Ski Day Waushara County – sponsor
- Berlin Veteran’s Foundation – donation
- Berlin Barracuda Swim Team – donation
- Green Lake Conservancy – sponsor
- Green Lake Yacht Club – sponsor
- Support Groups – Cancer and Diabetes Support groups
- Athletic Training Services – support various communities at games; provide concussion testing
- Printing Donations (in-kind) – Town Square in Green Lake, various community/non-profit events
- Surgical Supplies – Donation to 3rd world countries
- Juliette Manor Safe House – Provide trick-or-treaters a safe place to go to on Halloween

DEMOGRAPHIC AND ECONOMIC DATA REPORT

Community Health Network has created a network that is changing the way we embrace our communities. To fulfill the CHN mission – to provide superior services to improve the health of those we serve – the CHN Medical Group consists of more than 35 physicians, nurse practitioners, and physician assistants, providing services at two hospitals, Berlin Memorial Hospital and Wild Rose Community Memorial Hospital, and 10 CHN Medical Centers (community-based primary care facilities) located throughout central Wisconsin. Medical Centers are located throughout three counties – Green Lake, Waushara, and Marquette.

Primary and Secondary Service Area Map



Volume Summary – All Service Lines – 2010 – Primary Service Area

	OP				IP				ER			
	BMH	BMH % of Total	WRCMH	WRC MH % of Total	BMH	BMH % of Total	WRCMH	WRC MH % of Total	BMH	BMH % of Total	WRCMH	WRC MH % of Total
53926-Dalton	20	0.5%	-	0.0%	2	0.1%	-	0.0%	29	0.4%	-	0.0%
53946-Markesan	185	4.9%	-	0.0%	132	6.8%	-	0.0%	301	3.8%	1	0.0%
53949-Montello	208	5.5%	1	0.8%	96	5.0%	2	0.5%	336	4.3%	16	0.4%
53964-Westfield	54	1.4%	1	0.8%	30	1.6%	2	0.5%	83	1.1%	19	0.5%
54909-Almond	7	0.2%	4	3.1%	5	0.3%	13	3.1%	1	0.0%	67	1.7%
54923-Berlin	903	23.9%	1	0.8%	506	26.2%	2	0.5%	2,798	35.4%	34	0.9%
54930-Coloma	46	1.2%	3	2.4%	25	1.3%	8	1.9%	54	0.7%	70	1.8%
54941-Green Lake	164	4.3%	-	0.0%	72	3.7%	-	0.0%	279	3.5%	-	0.0%
54943-Hancock	34	0.9%	9	7.1%	11	0.6%	24	5.8%	29	0.4%	184	4.7%
54960-Neshkoro	266	7.0%	4	3.1%	88	4.6%	7	1.7%	410	5.2%	68	1.7%
54963-Omro	55	1.5%	-	0.0%	25	1.3%	-	0.0%	89	1.1%	2	0.1%
54965-Pine River	79	2.1%	2	1.6%	17	0.9%	2	0.5%	121	1.5%	62	1.6%
54966-Plainfield	27	0.7%	9	7.1%	12	0.6%	17	4.1%	20	0.3%	191	4.9%
54967-Poy Sippi	-	0.0%	-	0.0%	-	0.0%	-	0.0%	-	0.0%	-	0.0%
54968-Princeton	218	5.8%	-	0.0%	128	6.6%	-	0.0%	408	5.2%	1	0.0%
54970-Redgranite	257	6.8%	3	2.4%	137	7.1%	9	2.2%	822	10.4%	112	2.9%
54971-Ripon	285	7.5%	-	0.0%	91	4.7%	-	0.0%	239	3.0%	3	0.1%
54982-Wautoma	488	12.9%	30	23.6%	263	13.6%	149	35.8%	835	10.6%	1,424	36.5%
54984-Wild Rose	149	3.9%	56	44.1%	60	3.1%	160	38.5%	95	1.2%	986	25.3%
99992-Waushara County - Masked	44	1.2%	1	0.8%	34	1.8%	3	0.7%	142	1.8%	78	2.0%
99995-Green Lake County - Masked	20	0.5%	-	0.0%	8	0.4%	-	0.0%	74	0.9%	-	0.0%
Other-Oshkosh	85	2.2%	-	0.0%	45	2.3%	-	0.0%	64	0.8%	24	0.6%
Other-Except Oshkosh	185	4.9%	3	2.4%	141	7.3%	18	4.3%	673	8.5%	558	14.3%
Total	3,779	100%	127	100%	1,928	100%	416	100%	7,902	100%	3,900	100%

Demographics – Primary Service Area

Population by Age and Gender-PSA

Group	Male 2011	Female 2011	Total 2011	Male 2016	Female 2016	Total 2016	% Male Change	% Female Change	% Total Change
0 to 4	2,123	2,055	4,178	2,229	2,130	4,359	5.0%	3.6%	4.3%
5 to 14	4,315	4,169	8,484	4,299	4,109	8,408	-0.4%	-1.4%	-0.9%
15 to 24	5,009	4,333	9,342	5,024	4,516	9,540	0.3%	4.2%	2.1%
25 to 34	4,088	3,386	7,474	4,307	3,678	7,985	5.4%	8.6%	6.8%
35 to 44	4,348	3,940	8,288	4,081	3,436	7,517	-6.1%	-12.8%	-9.3%
45 to 54	5,838	5,699	11,537	5,067	4,953	10,020	-13.2%	-13.1%	-13.1%
55 to 64	5,414	5,527	10,941	5,880	5,965	11,845	8.6%	7.9%	8.3%
65 to 74	3,716	4,079	7,795	4,351	4,806	9,157	17.1%	17.8%	17.5%
75 to 84	2,123	2,629	4,752	2,197	2,712	4,909	3.5%	3.2%	3.3%
85 and up	706	1,541	2,247	816	1,709	2,525	15.6%	10.9%	12.4%
Total	37,680	37,358	75,038	38,251	38,014	76,265	1.5%	1.8%	1.6%

Population by Zip as a Percent of Total PSA

Zip	Male 2011	Female 2011	Total 2011	Male 2016	Female 2016	Total 2016
53926-Dalton	1.9%	1.9%	1.9%	1.8%	1.9%	1.9%
53946-Markesan	5.8%	5.7%	5.7%	5.7%	5.6%	5.7%
53949-Montello	7.9%	8.4%	8.2%	7.8%	8.4%	8.1%
53964-Westfield	4.2%	4.6%	4.4%	4.2%	4.6%	4.4%
54909-Almond	3.0%	2.9%	3.0%	3.0%	2.9%	3.0%
54923-Berlin	11.4%	11.5%	11.4%	11.2%	11.2%	11.2%
54930-Coloma	2.5%	2.4%	2.4%	2.5%	2.4%	2.4%
54941-Green Lake	3.8%	3.8%	3.8%	3.7%	3.7%	3.7%
54943-Hancock	2.9%	2.7%	2.8%	2.9%	2.8%	2.9%
54960-Neshkoro	3.6%	3.7%	3.6%	3.5%	3.6%	3.6%
54963-Omro	9.8%	9.8%	9.8%	10.1%	10.1%	10.1%
54965-Pine River	1.7%	1.6%	1.7%	1.7%	1.6%	1.6%
54966-Plainfield	3.0%	2.7%	2.8%	3.0%	2.7%	2.8%
54967-Poy Sippi	0.5%	0.4%	0.5%	0.5%	0.4%	0.5%
54968-Princeton	4.1%	4.4%	4.3%	4.1%	4.4%	4.2%
54970-Redgranite	4.8%	4.7%	4.8%	5.1%	5.0%	5.1%
54971-Ripon	14.1%	15.1%	14.6%	14.0%	15.0%	14.5%
54982-Wautoma	10.8%	9.6%	10.2%	10.9%	9.6%	10.3%
54984-Wild Rose	4.2%	4.1%	4.2%	4.1%	4.1%	4.1%
Total	100.0%	100.0%	100.0%	100.0%	100.0%	100.0%

Note: Individual amounts may not sum to total due to rounding

HEALTH INDICATOR/HEALTH OUTCOME DATA REPORT

The Community Health Network (CHN) service area encompasses Green Lake, Marquette, and Waushara Counties. The demographics of this area are fairly homogenous, creating trends in both health indicators and health outcomes that are also consistent.

Health Indicators

Health indicators impacting the CHN service area include increased levels of poverty and unemployment, fewer college-educated adults, elevated rates of poor health behaviors, and an aging population.

Poverty and unemployment in the three primary counties typically range 1-2% higher than the State average. The median household income is lower than the State average (\$52,374) in all 3 counties, with Green Lake County at \$48,937, Marquette County at \$45,046, and Waushara County at \$43,544. These factors influence access to, and the use of healthcare services, and are predictors of poor health behaviors and educational attainment. Access to healthcare includes the ability to navigate barriers such as transportation, cost, lack of insurance, and limited access to specialty care. Green Lake, Marquette, and Waushara Counties have all indicated that access to care is their area of greatest need. The UW-Population Health Institute's County Health Rankings indicate a higher level of uninsured in Marquette (12%) and Waushara (14%) Counties compared to the State (11%).

The relationship between college education and improved health outcomes is well established, with the number of years of formal education correlating strongly with improved work and economic opportunities, reduced stress, and healthier lifestyles. While the high school graduation rates on are on par or better than the State average, college education among adults is significantly lower in the three counties. (Green Lake – 50%, Marquette – 46%, Waushara – 48%, Wisconsin – 64%)

Health behaviors such as poor nutrition, lack of physical activity, tobacco use, and other substance abuse contribute to increased rates of obesity, diabetes, and other chronic and life-threatening conditions. The CHN service area has identified nutrition and physical activity as well as alcohol, tobacco and other drug abuse as high priority areas that require attention. The County Health Rankings has supported this claim ranking Marquette County as one the poorest ranking counties in the State for health behaviors, and showing higher than average obesity and physical inactivity rates in all three counties.

The percentage of the population aged 65 years and over in Green Lake County (20.1%), Marquette County (21.6%), and Waushara County (21.1%) is significantly higher than the State population (14.4%). An aging population influences the economic make-up of the work force, the support services needed locally, and the demand and type of services provided by local healthcare providers.

These indicators provide insight to the bigger picture as the synergies of these factors reveal themselves as health outcomes. At the same time, they allow us to identify opportunities for prevention and means to better predict and respond to the needs of the community.

Health Outcomes

Health outcomes are characterized by the presentation of a specific illness, health condition or even death that results from living conditions, behavior, environment, culture, and genetics. Perhaps the most definitive outcome is the years of potential life lost (YPLL). This is a figure that measures premature death by accounting for difference between the age of death, and a life expectancy of 75 years. The earlier an individual dies, the more years of potential life are lost. This measure weights younger deaths and highlights opportunities for prevention.

The County Health Rankings utilize this statistic as a foundation for measuring health outcomes. In this process, the CHN service area ranks lower than the majority of the State. Compared to the State average of 5,878 YPLL, all three counties report higher rates of premature death with Green Lake County at 7,422 YPLL, Marquette County at 8,009 YPLL, and Waushara County at 6,879 YPLL. The YPLL is highest among those ages 45-64 indicating high levels of premature death in this age range. A healthy population would expect that the YPLL be lower for the majority of the population with any peaks closer to age 75.

This information is best put into context by noting the leading causes of death in the CHN service area. The leading cause of death in both Green Lake and Waushara Counties is heart disease, followed by cancer. Notably, Marquette County cancer rates exceed their heart disease rate, bucking the trend in Wisconsin and the nation. Other common causes of death include diabetes, chronic respiratory diseases, cerebrovascular diseases, and accidents. These causes of death can be indicative of the high level of poverty, lower education levels, and poor health behaviors mentioned earlier. Coupled with the high rates of premature death, this presents a bigger picture of health trends and outcomes in the CHN service area. The three counties have all listed health behaviors among their top concerns. Poor and inadequate nutrition, inactive lifestyles, and the use of alcohol, tobacco and other drugs contribute to the deadly health conditions responsible for our area's premature deaths.

CHN has recognized an opportunity to support their community and engage in local efforts to improve health behaviors through wellness promotions, civic action, and contributing to County initiatives to improve health. CHN is uniquely positioned to extend specialized care into rural areas that have been historically underserved. Through our continued growth and regular assessment of our community's needs, CHN continues to serve and advocate for the health of rural Wisconsin.

COMMUNITY INPUT SUMMARY REPORT

Each county coalition applied different methodologies including the surveys and focus groups. Themes from these groups are found in the comments and concerns and reflected in the final outcome of the health incomes and outcome data report in each respective County CHNA.

COMMUNITY NEEDS AND IMPLEMENTATION STRATEGY

Green Lake County Community Health Needs Assessment:

<http://www.co.green-lake.wi.us/uploads/forms/CHIP-2010-Plan.pdf>

Marquette County Community Health Needs Assessment and Improvement Plan:

<http://www.co.marquette.wi.us/Departments/Health/pdf/assesplan/Marquette%20County%20Community%20Health%20Assessment%20and%20Health%20Improvement%20Plan%202012.pdf>

Waushara County Community Health Improvement Plan:

http://www.wausharacountypublichealth.com/Community_Health_Needs_Assessment_-_CHA.pdf

HOSPITAL FINAL IMPLEMENTATION PLAN

Initial Actions/Assessment

As a first step in creating its implementation plan, CHN examined the needs in its medical service area and audited the programs and services that it currently provides to address these needs. CHN's participation on each of the aforementioned coalitions provides an outlet for education related to these existing programs.

Green Lake County

- Physical activity
 - Continue to sponsor healthy activities:
 - o 13.1
 - o Run/Walk for Cancer
 - o Wellness Program
- Nutrition and Access to Healthy Foods
 - Employs three dieticians and two diabetic educations in our primary service area.
- Healthy Growth & Development
 - Outreach health education program targeting children elementary and middle school aged called "Read Run Reach".
 - CHN Wellness sponsors Greenway Trails
- Alcohol and Drugs
 - CHN's primary care physicians for referrals and resources for those struggling with addiction
- Behavioral Health
 - CHN physicians manage behavioral health issues and refer when it is outside of their scope

Marquette County

- Access to Care
 - We are the only provider of health care services in Marquette County with a primary care clinic located in Montello, Wisconsin.
- Alcohol and Drugs
 - CHN's primary care physician for referrals and resources for those struggling with addiction
- Physical and Nutrition
 - CHN is sponsoring a Wellness Campaign for residents in Marquette County
- Behavioral
 - CHN physicians manage behavioral health issues and refer when it is outside of their scope

Wausara County

- Adequate, Appropriate, and Safe Food and Nutrition
 - Employs three dietitians and two diabetic educators in our primary service area.
- Alcohol and Other Drug Use
 - CHN's primary care physician for referrals and resources for those struggling with addiction
- Chronic Disease Prevention and Control
 - Continue to sponsor healthy activities
 - Provide preventative care through primary care physicians
 - Diabetic education
- Environmental and Occupation
 - CHN has an Occupational Health program that offers Health Risk Assessments and small scale sleep studies.
- Healthy Growth and Development
 - Sponsor "Reach the Peak," a kid's fun run at Mount Morris that benefits the after school programs in the area
- Injury and Violence
 - Currently not part of our three year plan due to financial and staff constraints.
- Mental Health
 - CHN physicians manage behavioral health issues and refer when it is outside of their scope
- Oral Health
 - Provide financial assistance to the County programs in our Medical Service Area addressing oral health care for area youth
- Physical Activity
 - Sponsor "Reach the Peak," a kid's fun run at Mount Morris that benefits the after school programs in the area
- Reproductive and Sexual Health
 - Provide Sexual Assault Nursing Services Program
- Tobacco Use and Exposure
 - Continue to work with three community coalitions to promote and enforce their tobacco cessation programs.

Implementation Plan

CHN identified three core initiatives that encompass as many of the identified needs in CHN's Medical Service Area as possible. CHN will work toward these initiatives in its implementation plan closely in conjunction with the three county coalitions in our medical service area. CHN's implementation plan will be organic as it intends to continually review and adjust the implementation of these initiatives to meet community needs. The following summary presents the initiatives we have currently identified and demonstrates the first steps on how we intend to do this.

1. Tobacco / Smoking Cessation
 - a. CHN will expand upon tobacco / smoking cessation education provided to our patients
 - b. CHN Wellness will create a tobacco cessation educational campaign to be used in both community and workplace settings
2. General Wellness and Physical Activity
 - a. CHN WorkWell will increase the number of employers offering workplace wellness initiatives in our medical service area
 - b. Expand the Read, Run, Reach Program with the school systems in our Medical Service Area to address physical activity, literacy, and kindness in our youth
 - c. Continue to offer an annual Night Out for Women's Health event that targets the three counties served by CHN.
 - d. Begin offering a Strong Bones trainer to Medical Service Area to provide education and outreach about weight training to maintain bone density in middle age to older women.
3. Access to Healthcare
 - a. Continue to work with the county coalitions to address needs as they are identified and participate meaningful in county-specific implementation plans
 - b. Take the healthcare to employers instead of having them come to us (i.e. HRAs, flu shots, diabetic screening)
 - c. Increase physician availability through administrative support of increased same day services
 - d. Provide financial assistance to the County programs in our Medical Service Area addressing oral health care for area youth

Unfortunately, CHN is not able to address all of the identified needs of its entire Medical Service Area due to a variety of factors.

For example, although we are active in the prevention of alcohol and drug abuse by participation on our county coalitions, we are unable to address beyond that based on financial constraints and difficulty in recruiting in this area. CHN manages these behaviors through primary care services. Additionally, we are actively looking for partnerships with larger health systems to increase specialty services that can address these needs.

We do not intend to address Environmental and Occupational Health in Waushara County the way that Community Health Needs Assessment identifies it as it is beyond our scope.

COMMUNITY AWARENESS OF ASSESSMENT

We will publish this document on our external website and also have copies available onsite at the Berlin Memorial Hospital campus.

ATTACHMENTS: COUNTY COALITION DETAILED MEMBERSHIPS

Green Lake County Wellness Coalition

Name / Title

Jackie Westover, WI Well Woman's Program
 Pamela Alf, Wellness Coordinator
 Riann Kreiling, Exercise Physiologist
 Terri St. Lawrence, Community Health Program
 Nancy Gimenez, RN, BSN/CDE
 Danielle Krueger, RD, CD
 Beth Johnson, Family Living Agent
 Judy Kasuboski, Public Health Nurse Services
 James Salasek, PhD, Dir. Behavioral Health
 LeRoy Dissing, Dir. Human Services
 Terri Mael, RN School Nurse
 Allison Montag, Certified Lactation Consultant
 Lauree Renaud, Community Member
 Philip Robinson, Deputy Director
 Victoria Shereshevsky, AHEC Intern
 Andrea Lyke, Summer Intern/Community Member
 Betty Bradley, Aging Unit Manager
 Jana Tetzlaff, Clinical Services Unit Manager
 Joel Gerth, Lieutenant
 John Feeney, CEO
 Katherine Vergos, CFO, RN
 Kelly Krause, VP Marketing
 Dr. Barry Rogers
 Morgan Fox
 Jeri Loewe, RN, Certified Lactation Consultant
 Tracy Soda, RN, Public Health Nurse
 Lacey Bruce, Exercise Physiologist
 Harper Mruk, Director
 Melanie Simpkins, RN, BSN, MPH, PN
 Ted Kay, Director
 Ken Bates, Administrator
 Charlotte Mertens, School Nurse
 Jodi Becker, Counselor
 Sue Kinas, Administrative Assistant
 Dawn Brantley, Services Coordinator
 Yolanda Gallegos, Program Coordinator
 Julie Dosogne
 Angela Danke, Public Relations
 Angie Johnson, Wellness Coordinator

Organization

Green Lake, Marquette and Waushara Counties
 Community Health Network
 Agnesian, Ripon Medical Center
 Agnesian Healthcare, Fond du Lac
 Community Health Network
 Community Health Network
 UW-Extension
 Green Lake County Dept. of Health & Human Services
 Agnesian Healthcare, Fond du Lac
 Green Lake County Dept. of Health & Human Services
 Berlin School District
 Family Health La Clinica/WIC
 Green Lake Greenways
 Green Lake County Dept. of Health & Human Services
 Green Lake County Public Health
 Green Lake County Public Health
 Green Lake County Dept. of Health & Human Services
 Green Lake County Dept. of Health & Human Services
 Green Lake County Sheriff's Office
 Community Health Network/Berlin Hospital
 Agnesian Health Care/Ripon Medical Center
 Community Health Network
 Community Member
 UW Extension
 Green Lake County Dept. of Health & Human Services
 Green Lake County Dept. of Health & Human Services
 Ripon Medical Center
 Boys & Girls Club of Berlin
 Coffee & a Handout LLC and Berlin Hospital
 Family Health La Clinica FQHC
 Green Lake Public School District
 Markesan School District
 Berlin Area School District
 Princeton School District
 Fox River Industries Sheltered Workshop
 Princeton Senior Center
 Community Member
 Heidel House Resort in Green Lake
 Farmers & Merchants Bank of Berlin

Waushara County Wellness Coalition

Name / Title

Melanie Simpkins, Diabetic Educator
 Shannon Myers
 Bridget Daly
 Pat Bero
 Paul Theyel
 Dennis Hibray, Regional Office Director
 Jody Moesch-Ebling, Nurse Consultant
 Dawn Shuman, Administrator
 Patti Wohlfeil, BCRN,MPA, Health Office Director
 Valerie Ladwig
 Richelle Morrow
 Claude Olson
 Chris Sluke
 Pam Alf
 Everett Ecksteing
 Jan Novak
 Brian Pothier
 Andrew Hoyer-Booth
 Brittany Innes
 Mary Babler
 Kevin Meighan
 Peggy Stanislawski
 Tim Rosin
 Lynn Boening
 Denise Rigden
 Bruce Williams
 Nancy Gimenez
 Craig Griffis
 Kathleen Ludwikowski
 Cheryl Wuyts
 Lafe Hendrickson
 Brigitte Henschel

Organization

Community Health Network
 ADRC
 Health Dept., AmeriCorps Member
 Human Services/Prevention Council
 Human Services/Mental Health
 DPH
 DPH
 WRCMH
 Waushara County Health Dept.
 Dept. of Aging
 WRCMH
 Wild Rose School District
 WASD
 Community Health Network
 County Board
 DHS
 EMS
 WPHCA
 FHLC
 Network Health
 WCHD
 Plainfield Trucking
 Waushara County EMS
 Waushara County Sheriff's Dept.
 Aging & Disability Resource Center
 WRCMH
 Community Health Network
 Community Health Network
 Family Health
 WHS
 WCSO
 Community Member

Marquette County Wellness Coalition

Name / Title

Jan Banicki
 Trish Beckett, Special Education Teacher
 former HCHY Grant Coordinator
 Megan Brakebush
 Lauren Calnin
 Susan Cartwright, County Board Youth Representative
 Sue Condon
 Cheryl Deskins, Manager
 Joyce Gaulke, Food Service Director
 Craig Griffis, VP of Business Development
 Shelly Hamel, Vice President
 Vicki Huffman, Literacy Volunteer
 Rhonda Hughes, Manager
 Ted Kay, CEO
 Pat Kilbey, Conservationist
 Chris Klahn
 Joe Konrath, Chief Deputy
 Brian Knoll, Officer
 Sue Kozlowski, Teacher
 Janelle Krueger, Counselor
 Jan Krueger, Manager - Long Term Support Services
 Chris Langenfeld
 Chris Lee
 Jenice Mischler, Counselor
 Jerry Smart
 Tina Schoebel, Director of Christian Formation
 Andrew Stoehr, Elementary Physical Education Teacher
 Robert Turner, Recent College Graduate
 Christa Van Treeck, 4H Development Educator

Organization

Marquette County Board, Board of Health
 Montello Schools

 Local Business - Brakebush Brothers
 HCHY Youth Mobilizer
 Montello School
 Divine Savior Health Care - Portage
 Kwik Trip
 Montello & Westfield Schools
 Community Health Network
 Prairie Sands Chapter of the Prairie Enthusiasts
 Marquette County
 Holliday Shopping Center
 Family Health LaClinica
 Marquette County Land & Water
 DNR
 Marquette County Sheriff's Department
 Montello Police Department
 Montello Public Schools
 Marquette County Chemical Dependency Service
 Marquette County
 Renewable World Foundation
 CAP Services
 Montello Elementary School
 Marquette County Surveyor and former Montello Mayor
 St. Johns the Baptist Parish
 Montello Schools
 Community Member
 UW Extension